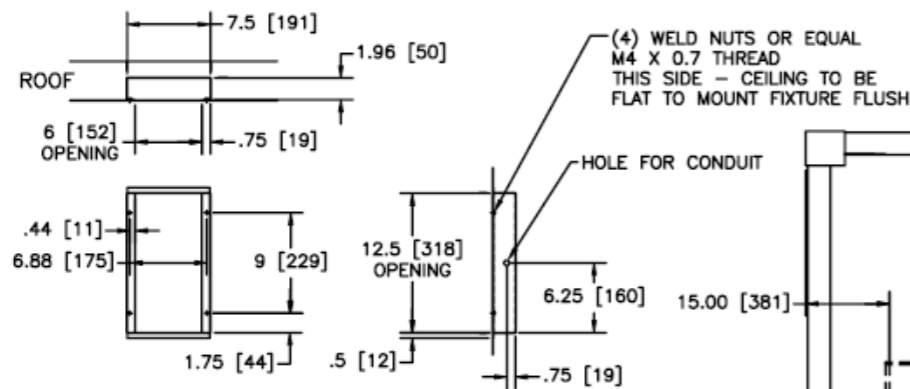


4 | 3 | 2 | 1

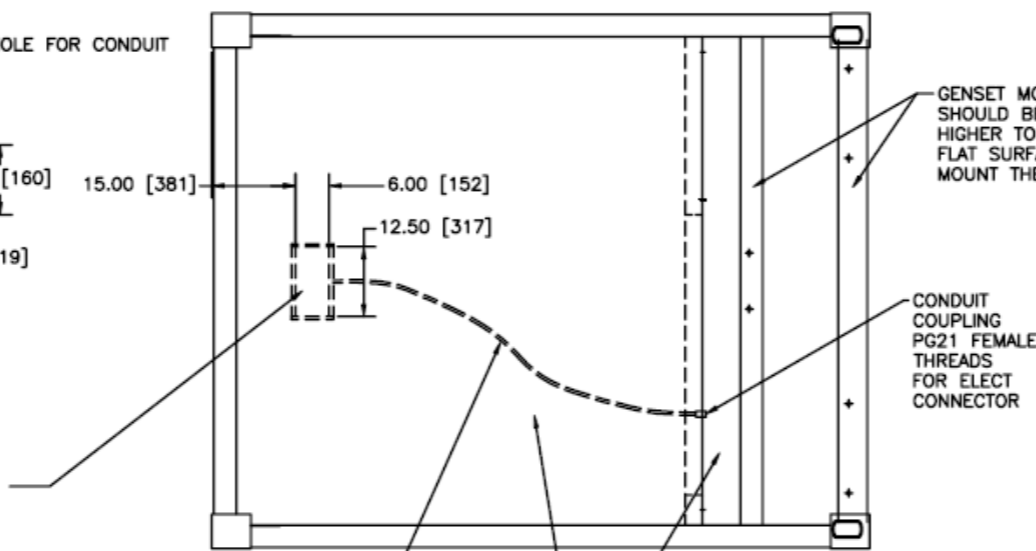
D



**DETAIL A**  
LIGHT FIXTURE MOUNTING  
BOX IN THE CEILING  
USE CEILING METAL  
SCALE X2

OPENING IN THE CEILING SEE DETAIL A  
TO MOUNT A UNBREAKABLE LIGHTING  
FIXTURES FLUSH CEILING MOUNTED FOR  
2 BULBS WHITE AND RED LIGHTING  
SUPPLIED

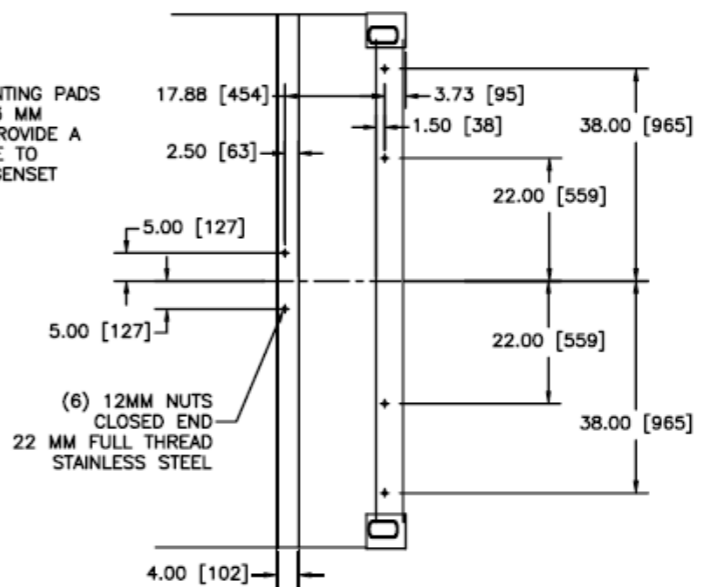
PLASTIC CONDUIT IN THE CEILING  
FOAM .51" [13] MINIMUM INSIDE DIA  
WITH WIRING BY CONTAINER BUILDER



GENSET MOUNTING PADS  
SHOULD BE 3 MM  
HIGHER TO PROVIDE A  
FLAT SURFACE TO  
MOUNT THE GENSET

CONDUIT  
COUPLING  
PG21 FEMALE  
THREADS  
FOR ELECT  
CONNECTOR

WATER DRAINAGE REQUIRED ON TOP SURFACES

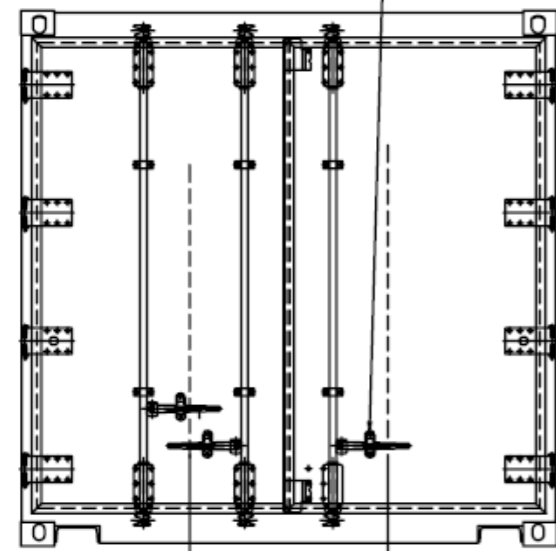


**DETAIL OF TOP SURFACE**  
REQUIRED FOR MOUNTING GENSET  
NMG-012  
WEIGHT 317 KG [700 LB]

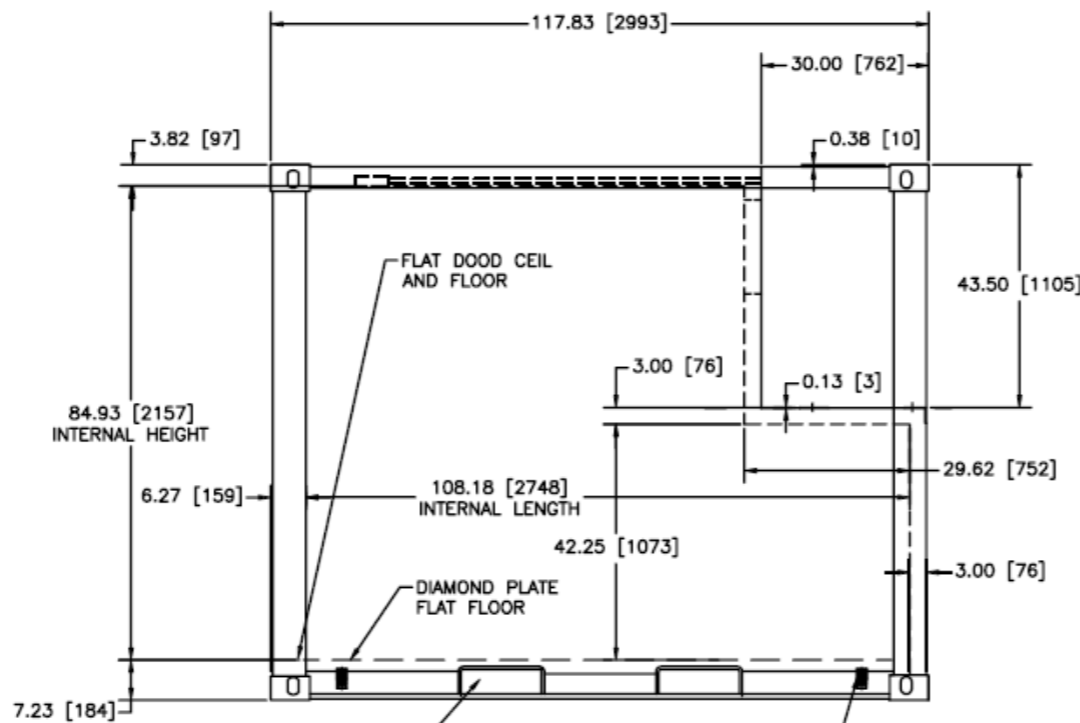
C

C

THE BACK DOOR REQUIRES  
THE LATCH TO OPEN THE  
DOOR FROM THE INSIDE



35.50 [902]  
BETWEEN SHELVING



FLAT DOORD CEIL  
AND FLOOR

DIAMOND PLATE  
FLAT FLOOR

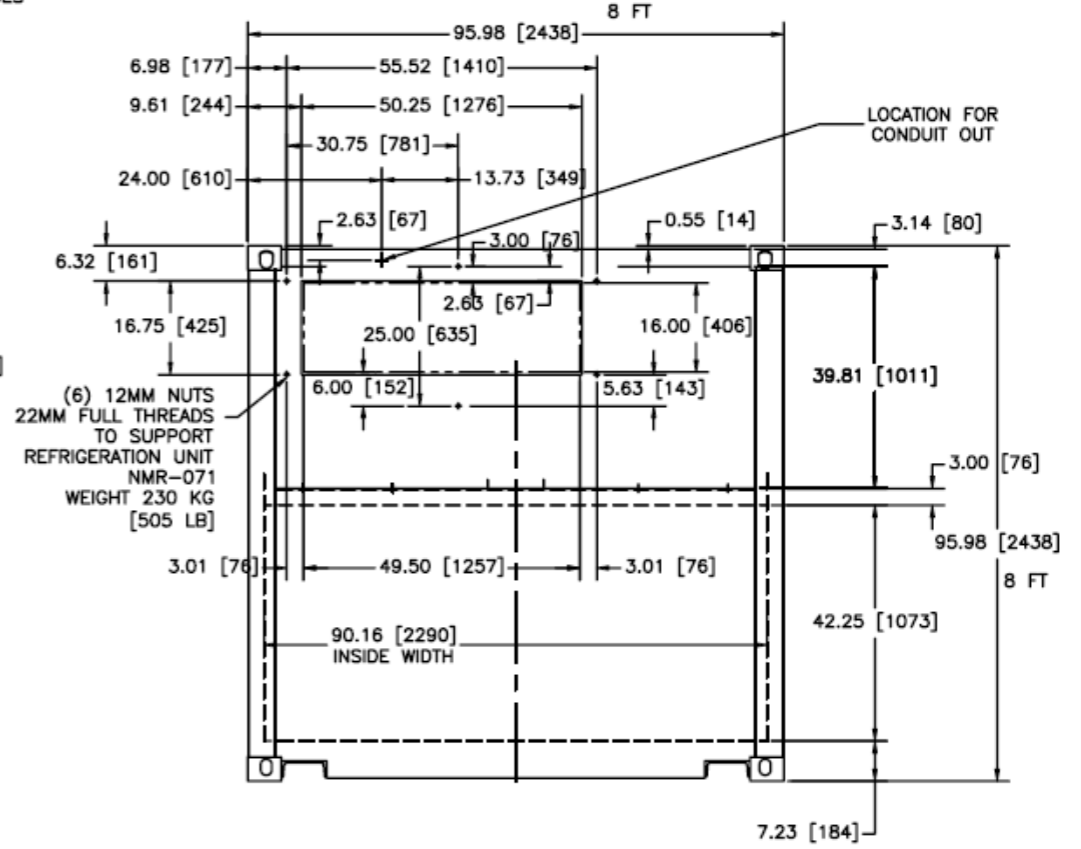
84.93 [2157]  
INTERNAL HEIGHT

108.18 [2748]  
INTERNAL LENGTH

7.23 [184]

FORK POCKETS  
WITH CLOSED BOTTOMS

(4) DRAIN AND VENT  
VALVES



(6) 12MM NUTS  
22MM FULL THREADS  
TO SUPPORT  
REFRIGERATION UNIT  
NMR-071  
WEIGHT 230 KG  
[505 LB]

LOCATION FOR  
CONDUIT OUT

A

A